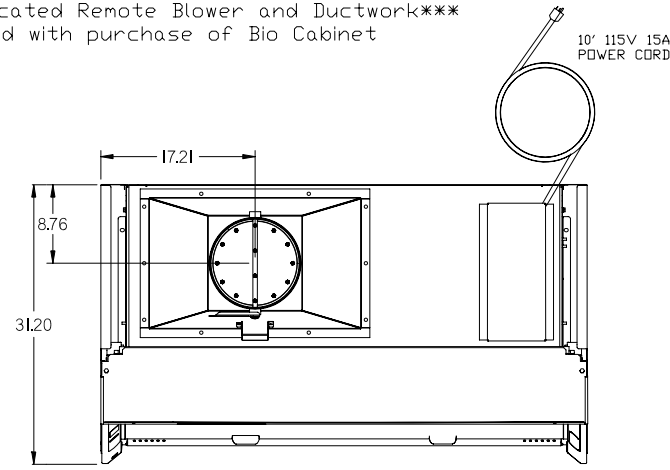
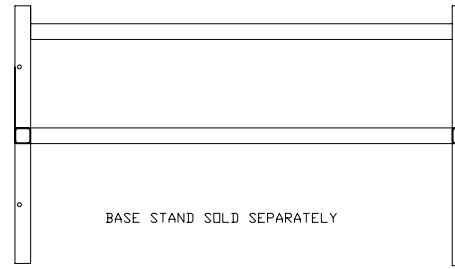


*** Requires Dedicated Remote Blower and Ductwork***
 Not included with purchase of Bio Cabinet

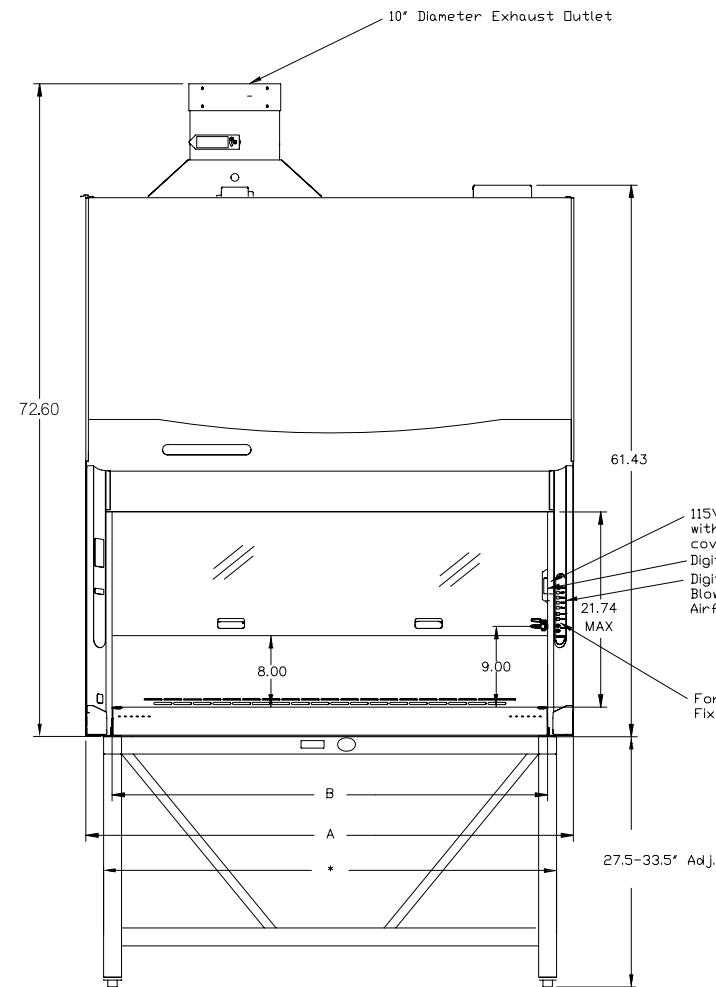


TOP VIEW

Nominal Width	A	B
4'	54.3"	48.5"
6'	78.3"	72.5"

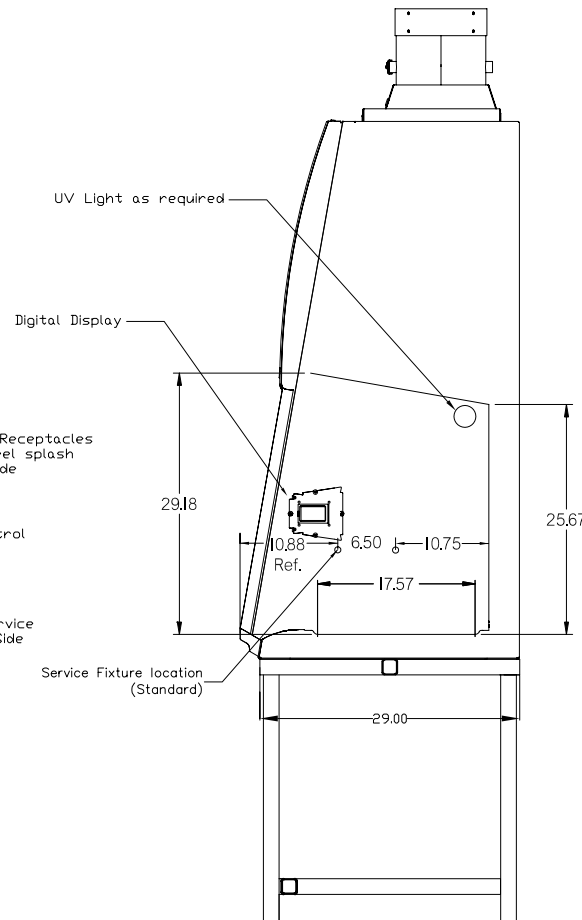


TOP VIEW



FRONT VIEW

* ALL STANDS ARE 3.75" SMALLER THAN SAFETY CABINETS



SIDE VIEW

GENERAL DESCRIPTION

Logic Series Class II, B2 Safety Cabinet
 B2-SCHEDULED
 Standard Features

- * Nominal inflow velocity of 105 feet per minute (fpm)
- * Nominal downflow velocity of 55 feet per minute (fpm)
- * 0% air recirculation
- * Intrinsically-safe negative pressure design
- * Two 99.99% efficient HEPA filters
- * Unitized 16 gauge stainless steel substructure
- * Crevice-free, type 304 stainless steel interior and removable, seamless, dished work surface
- * Epoxy coated exterior
- * Epoxy-coated, removable steel towel catch.
- * 10 degree angled, sliding, fully-closing, 0.25" tempered safety glass sash with anti-racking mechanism, 21.75" maximum loading height
- * Air-Wave Entry System
- * Contain-Air Negative Pressure Channel
- * ADA-compliant audible/visual alarm indicator with mute switch
- * Two ADA-compliant electrical duplex receptacles with ground fault interrupters and splash covers
- * Class 5 conditions per ISO 14644-1 & 2 (formerly Class 100)
- * NSF and ETL listed
- * Three year warranty on parts and labor
- * Interior-mounted, line of sight LCD information center. Displays status, data and components icons for at-a-glance monitoring.
- * "Filter Life Remaining" bar graph that displays an accurate percent of HEPA filter life remaining
- * Status line that gives specific feedback on alarm conditions such as "sash too high".
- * Alerts to warn when the filter life diminishes to 20% or airflow changes indicating an inlet grille or exhaust outlet obstruction.
- * Filter monitoring system consisting of an electronically commutated motor (ECM) that is programmed to deliver a precise volume of air as required and automatically adjusts as filters load without relying on airflow sensors.
- * Built-in ECM consumes 50% less energy, which allows for cooler and quieter operation, and provides more power for increased HEPA filter loading.
- * Smart-Start System that allows the user to program start up and shut down operations such as activation/deactivation of blower, fluorescent light when the sash is opened or closed.
- * Night-Smart System that idles the blower when the sash is fully closed to help maintain a clean, particulate-free environment inside the cabinet during periods of non-use.
- * Built-in interval or elapsed timer for experiment monitoring.
- * Touchpad control on right-hand side post for manual activation of blower, light, timer, audible alarm mute and menu selection.
- * Built-in timer for continuous or user-defined interval operation of the UV light, interlocked to prevent operation when the sash is opened.
- * 29" viewing height for visual accessibility
- * Curved stainless steel inlet grille. With Reverse-Air Secondary Airflow Slots to prevent airflow blockage.
- * Bright, 90-100 foot-candle, glare-free fluorescent lighting located outside the contaminated work area for safe, easy replacement.
- * Electronic security lock (optional activation) that requires access code to operate the cabinet.
- * 254 NM UV Lighting
- * Color: Glacier White (BSC and stand)
- * (1) Service Fixture Factory installed on 4' Cabinet.
- * (2) Service Fixtures Factory installed on 6' Cabinet.

SCALE:

SCALED TO FIT

Biological Safety Cabinets
 for:

LABCONCO
 Laboratory Environment
 Protecting your investment

Labconco Corporation
 8811 Prospect Avenue
 Kansas City, Mo 64132-2648
 (800) 821-5525
 www.labconco.com

No.	Date

Date:
7-30-07

Drawing #
B2-SCHEDULED

Drawn By:
Luke Savage

Checked By:

Approved By:

Sheet No.

Project Title:

Project No.