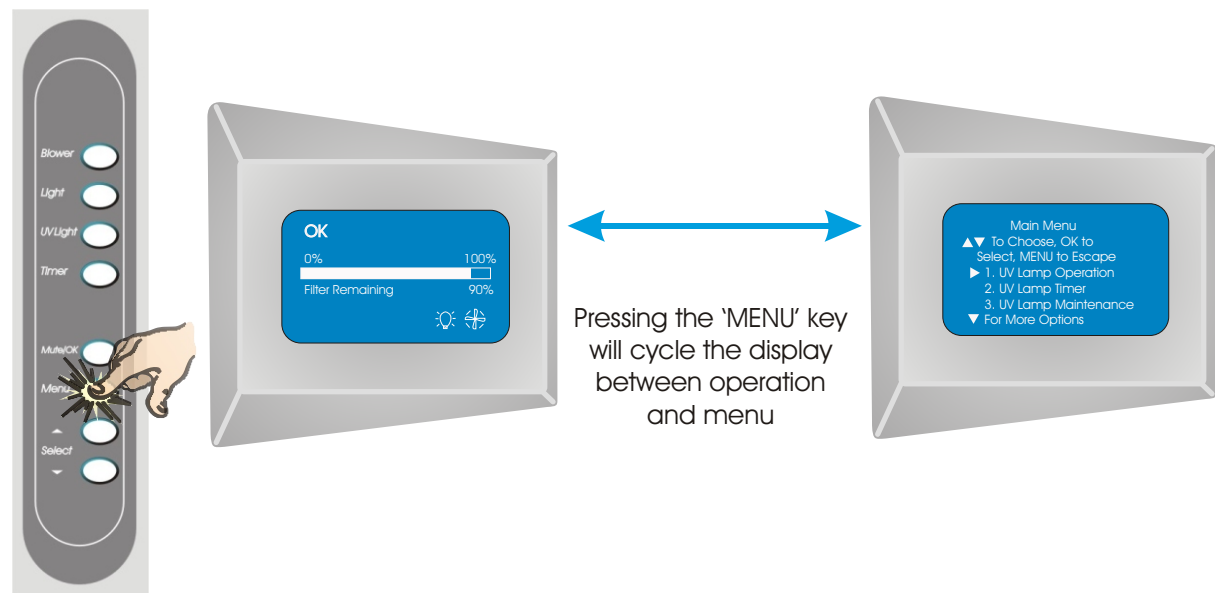
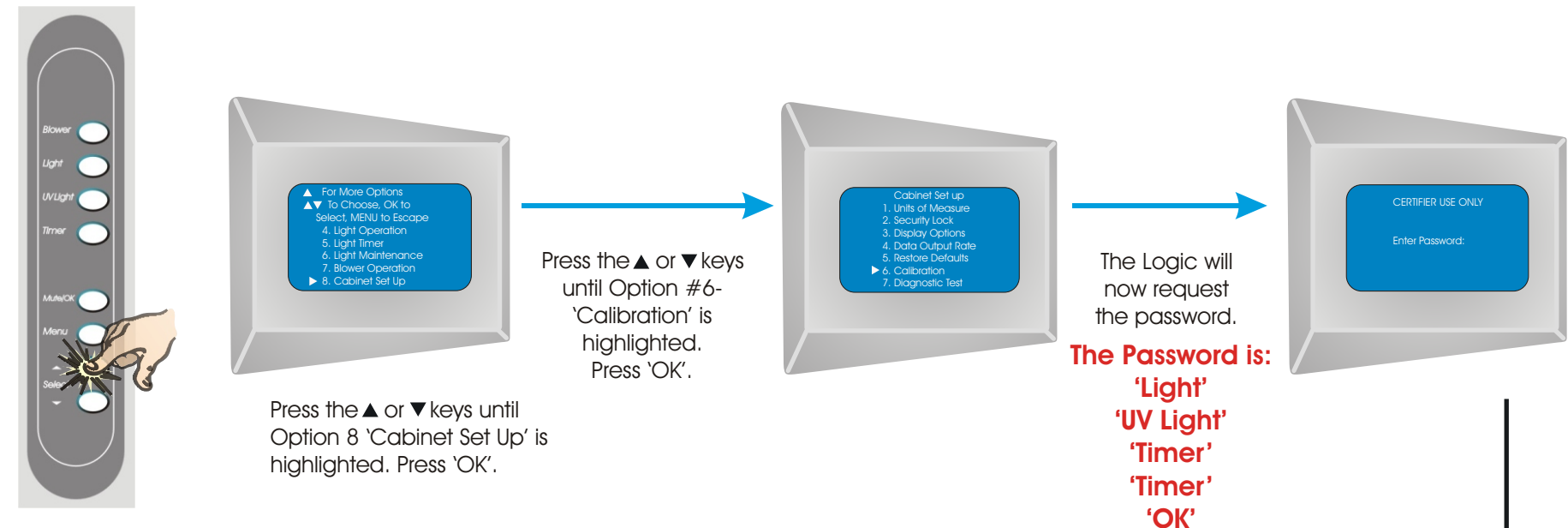


Navigating the *Logic* Certifier's Menu

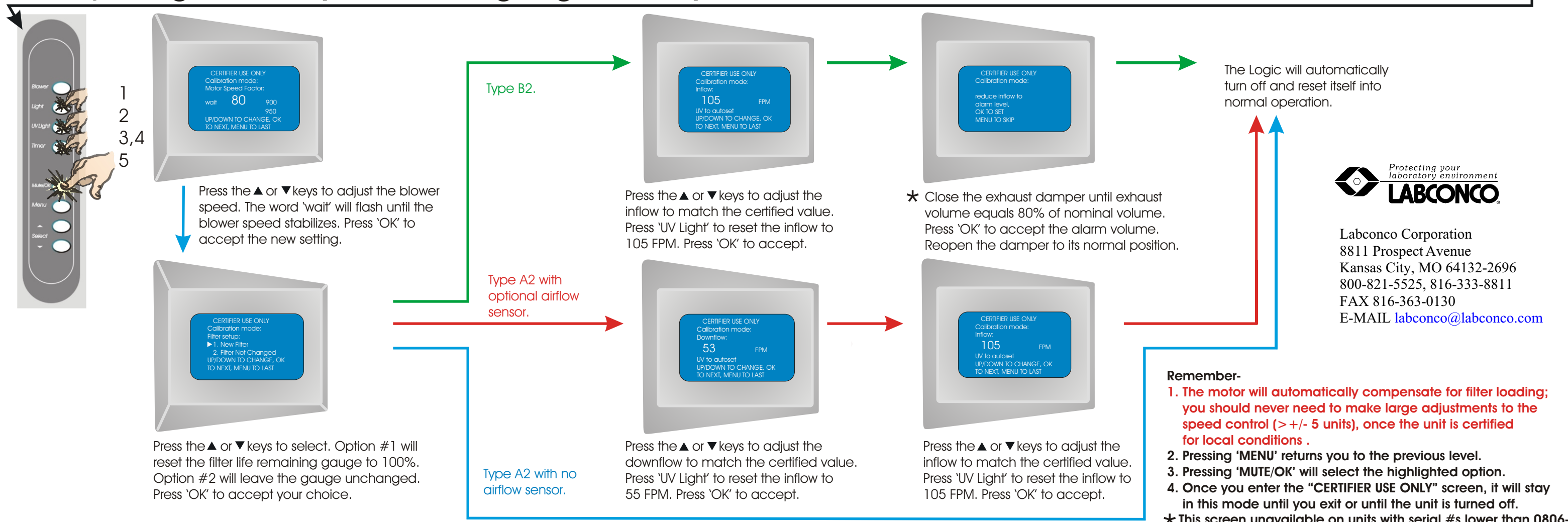
1. Accessing the Menu



2. Selecting the Cabinet Set Up Option



3. Adjusting blower speed, filter gauge and optional air sensor



Labconco Corporation
 8811 Prospect Avenue
 Kansas City, MO 64132-2696
 800-821-5525, 816-333-8811
 FAX 816-363-0130
 E-MAIL labconco@labconco.com